

Setting up the Tanning Bed Timers

Setting Up the Tanning Bed Timers

528 – 529





Setting Up the Tanning Bed Timers

If the timers have not been set up, a prompt will appear every time the AAC Check-In or Point of Sale Application is opened. Click **“Yes”** to set up the T-Max or FST timers or no to continue on to AAC Check-In or Point of Sale Applications.

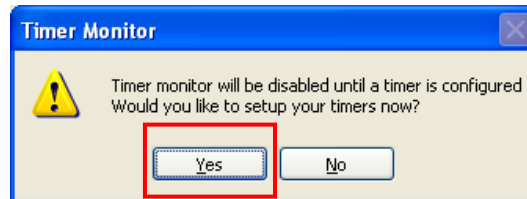


Figure 32-1.

On the Timer Configuration Window, choose the type of timers being used for the tanning beds. Make sure the timers are attached to the computer using the software. Choose the Com Port the timers use to connect to the computer. Then click on the **“Auto Detect”** Button as shown below.

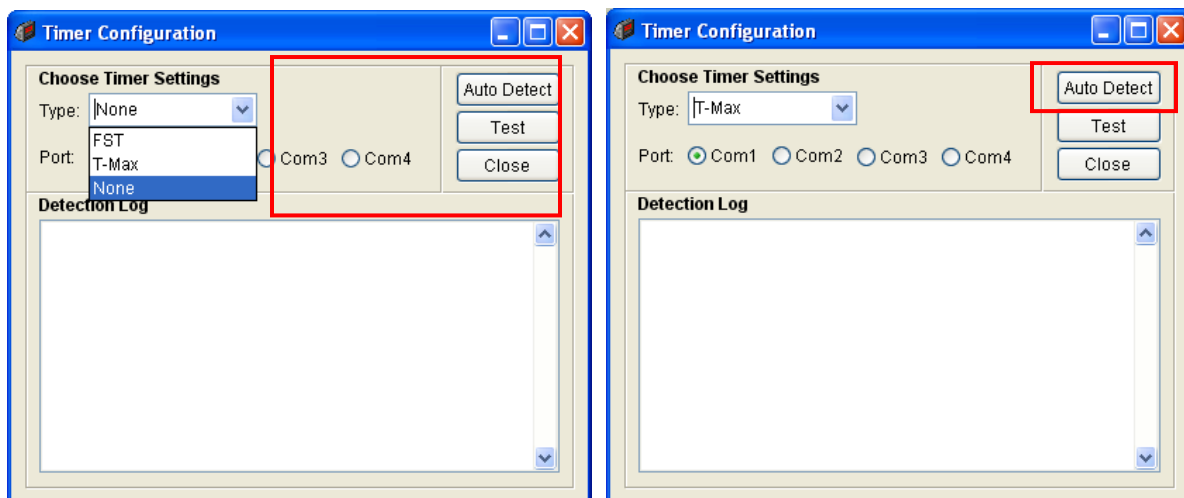


Figure 32-2.

The Auto Detect Button will attempt to find the timers through the selected com port. If the timers are found, a message window will open asking if the timer should be set as default. Select **“Yes”**.

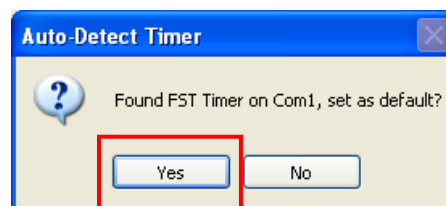


Figure 32-3.

Click the **“Test”** Button to make sure that the timer is working properly.

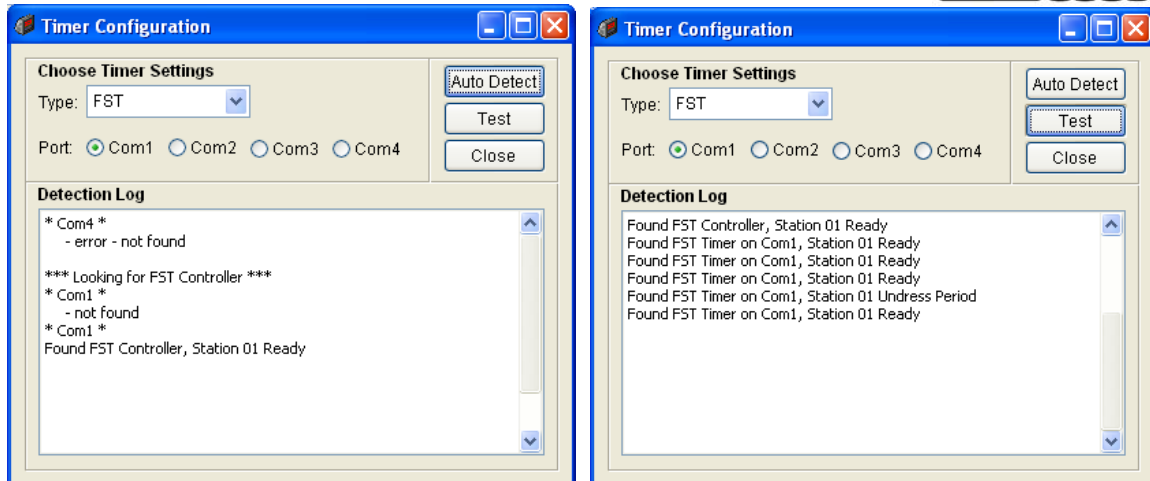


Figure 32-4.

Close the Timer Configuration Window and the timer should appear in the AAC Front Desk Time Monitor Window with a ready status.

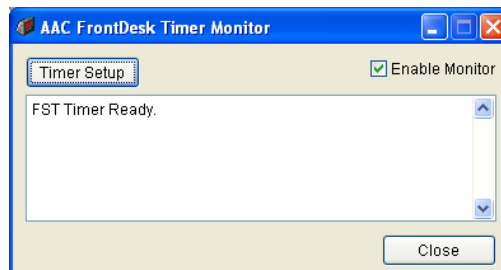


Figure 32-5.

Click on the **“Timer Setup”** Button at any time to return to the Timer Configuration Window. Click on the **“Minimize”** button to remove the Timer Monitor from the screen. It will be located in the system tray by the time. Now the timers are ready to be used with the Bed Status screen and Package Check-in.